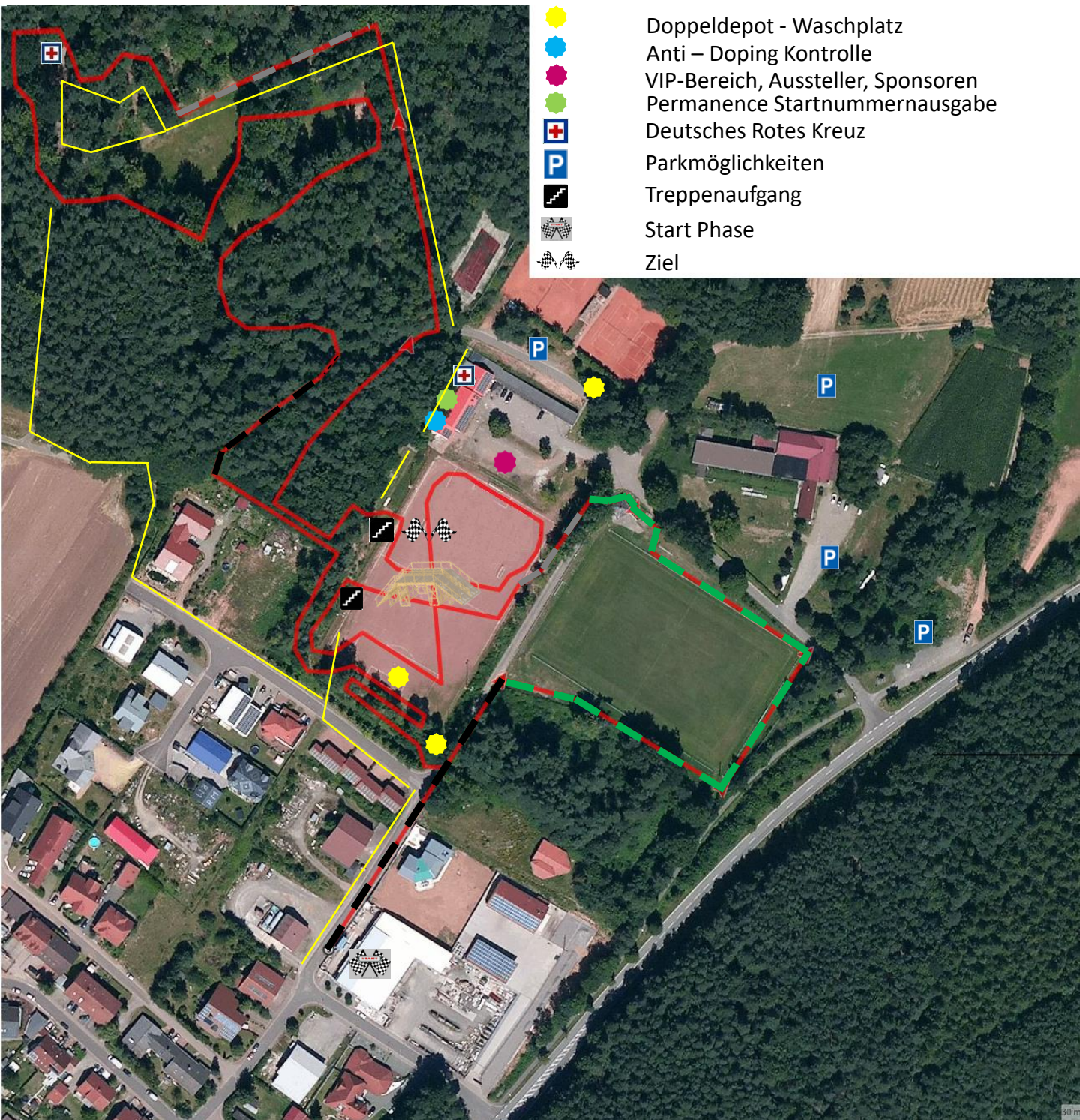











Deutsche Meisterschaft Cyclocross 2017

**Streckenverlauf
2,5 km**



-  Doppeldepot - Waschplatz
-  Anti - Doping Kontrolle
-  VIP-Bereich, Aussteller, Sponsoren
-  Permanence Startnummernausgabe
-  Deutsches Rotes Kreuz
-  Parkmöglichkeiten
-  Treppenaufgang
-  Start Phase
-  Ziel

-  Asphalt
-  Schotter befestigt
-  Wiese Gras
-  Hartplatz / Waldweg befestigt
-  Fußgänger - Zuschauerweg